



**Spring 2021 Student Perceptions of
Instruction: Response Rates by College and
University Overall**

Report by Drew Whittington
Office of Institutional Effectiveness

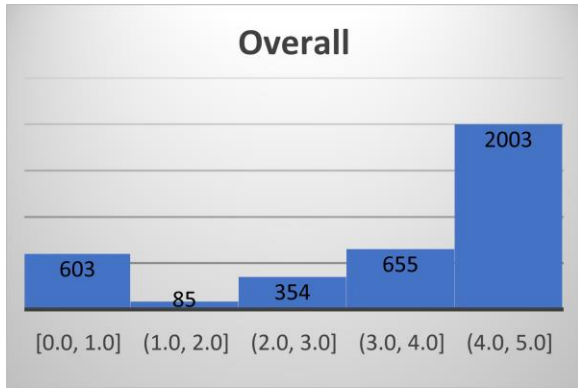
Purpose

The overall purpose of the following report is to provide university personnel with a quick and concise presentation of response rates for student perceptions of instruction by college for Spring 2021. The document contains histograms displaying the distribution of scores for each college, as well as the overall university rate (**52%**). Also listed are overall means, standard deviations (SD), and medians for each college.

Calculations

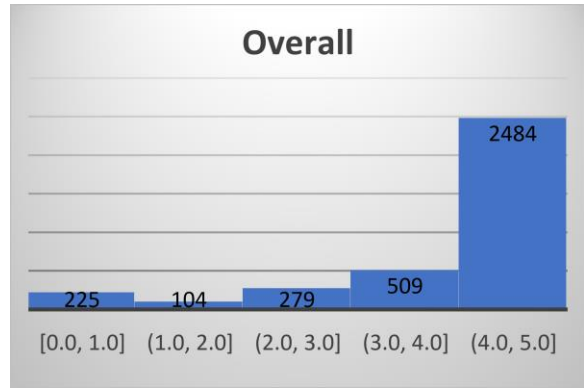
For each college, students' scores were averaged across items to indicate an overall mean score for each student. Then, histograms were created to display the distribution of overall mean scores for each college. Because items were averaged, and resulting scores were not whole numbers, the distributions graphs scores are in-between typical scores of 1-5 (Scale: 5 = Excellent, 4 = Very Good, 3 = Good, 2 = Fair, 1 = Poor). Therefore, the resulting labels indicate the number of scores with values of 1, 1.01 to 2, 2.01 to 3, 3.01 to 4, and 4.01 to 5.

Table 1: Allied Health Professionals



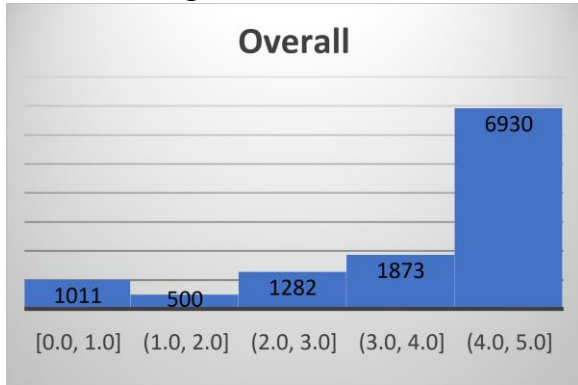
Mean	SD	Median	Response Rate (%)
4.29	.95	4.91	44

Table 4: Education/Professional Studies



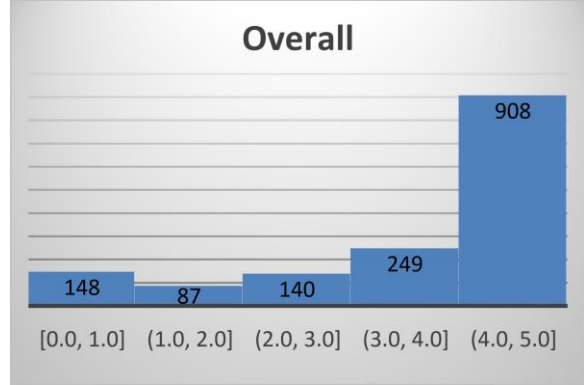
Mean	SD	Median	Response Rate (%)
4.41	.92	5	61

Table 2: College of Arts and Sciences



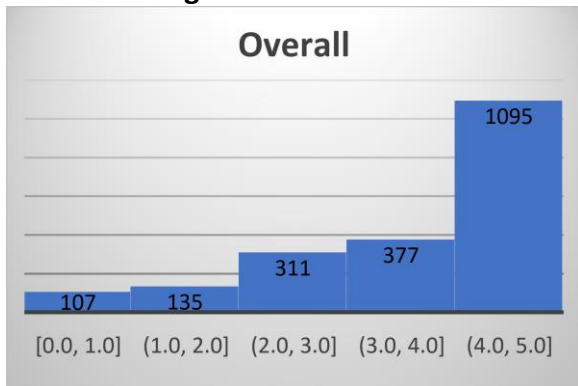
Mean	SD	Median	Response Rate (%)
4.22	1.04	4.82	46

Table 5: College of Engineering



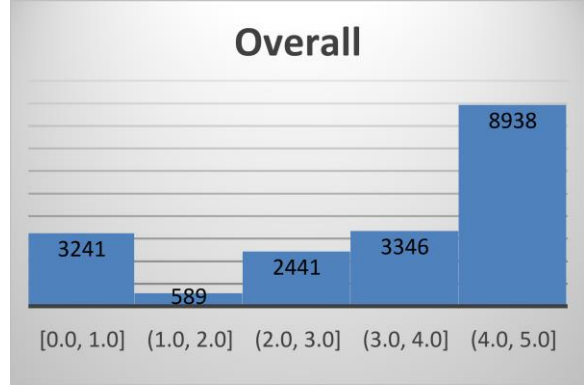
Mean	SD	Median	Response Rate (%)
4.15	1.13	4.73	52

Table 3: College of Business



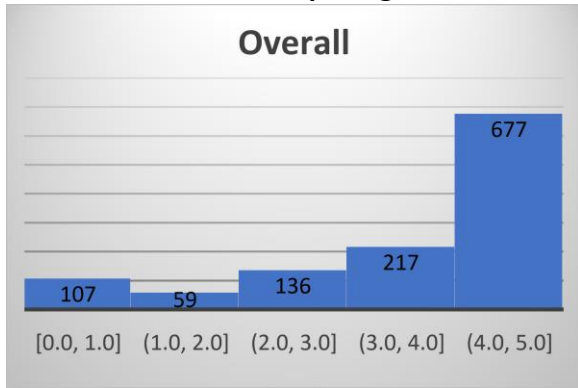
Mean	SD	Median	Response Rate (%)
4.01	1.14	4.45	46

Table 6: College of Nursing



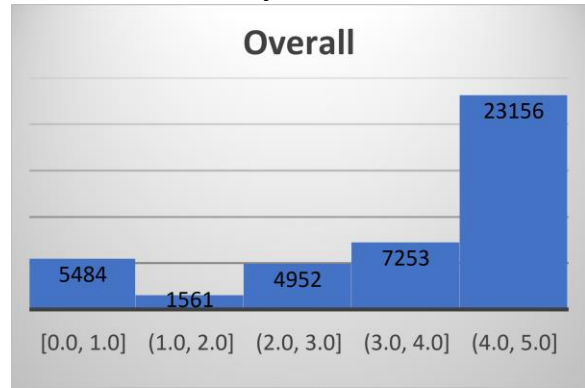
Mean	SD	Median	Response Rate (%)
4.19	1	4.73	70

Table 7: School of Computing



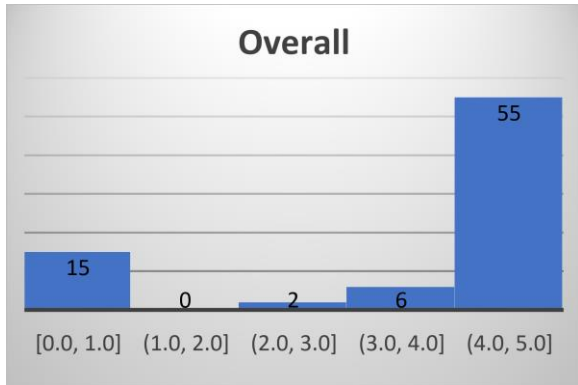
Mean	SD	Median	Response Rate (%)
4.13	1.08	4.64	52

Table 10: University Overall



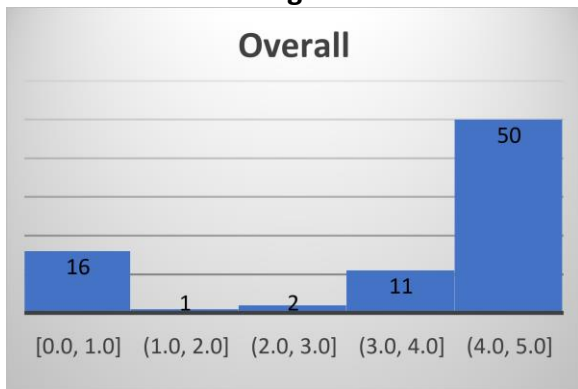
Mean	SD	Median	Response Rate (%)
4.21	1.02	4.82	52

Table 8: The Graduate School



Mean	SD	Median	Response Rate (%)
4.74	.5	5	35

Table 9: Honors College



Mean	SD	Median	Response Rate (%)
4.58	.65	4.86	32