



UNIVERSITY OF SOUTH ALABAMA

Fall 2022 Student Perceptions of Instruction: Response Rates by College and University Overall

Office of Institutional Effectiveness

Purpose

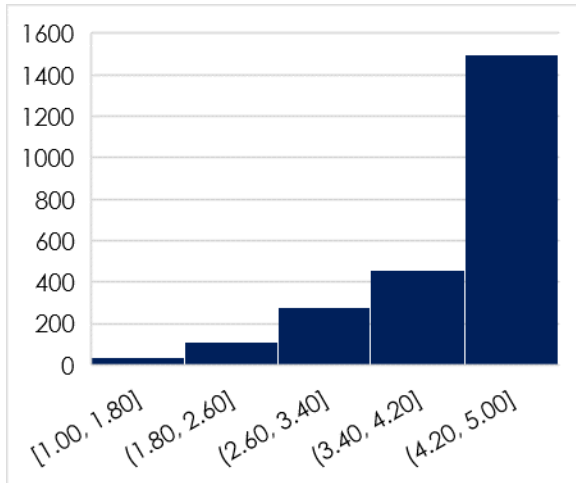
The purpose of this report is to provide a quick and concise presentation of response rates and scores for student perceptions of instruction (SPIs) by college for fall 2022. The document contains histograms displaying the distribution of scores for each college, as well as the university's overall score and response rate (50%). Also listed are overall means, standard deviations (SD), and medians for each college.

Calculations

For each college, scores were averaged across items to indicate an overall mean score for each respondent. Then, histograms were created to display the distribution of overall mean scores for each college.

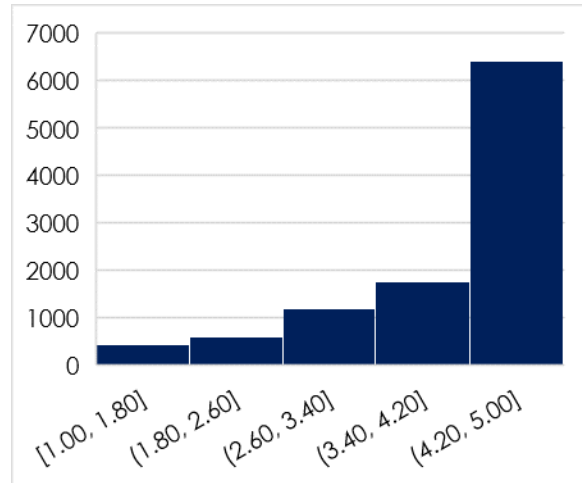
FALL 2022 RESPONSE RATES REPORT

Table 1: Allied Health Professions



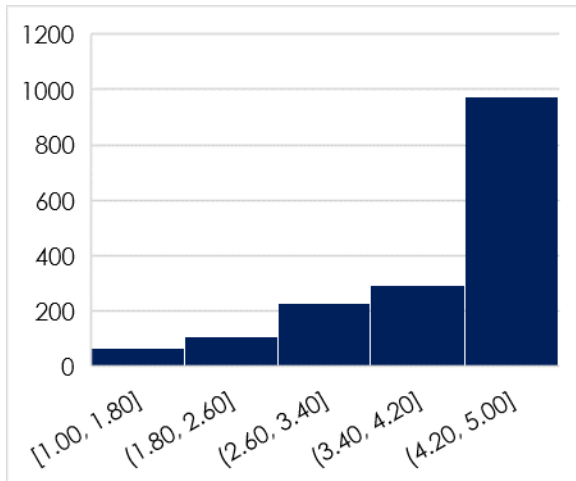
Mean	SD	Median	Response Rate (%)
4.31	.90	4.82	47%

Table 2: College of Arts and Sciences



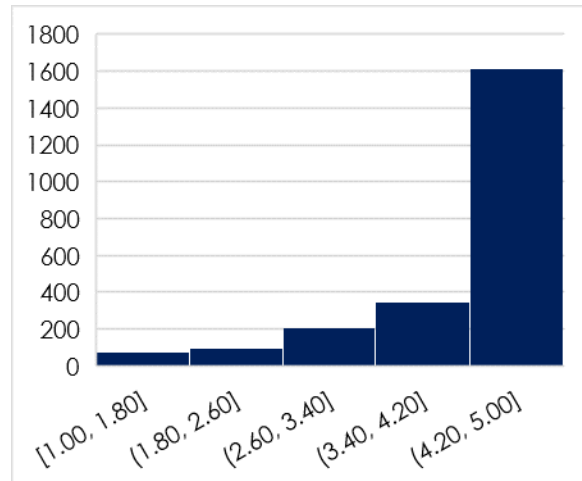
Mean	SD	Median	Response Rate (%)
4.21	1.03	4.73	45%

Table 3: College of Business



Mean	SD	Median	Response Rate (%)
4.15	1.05	4.64	41%

Table 4: Education/Professional Studies



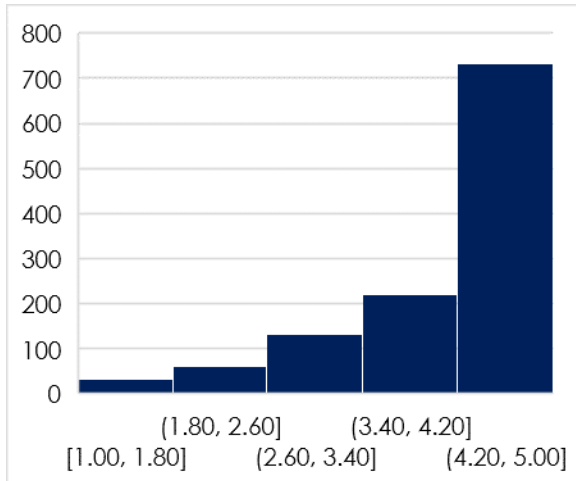
Mean	SD	Median	Response Rate (%)
4.38	.96	5	48%

OFFICE OF INSTITUTIONAL EFFECTIVENESS

AD 330 | 307 University Blvd. N | Mobile, Alabama 36688-0002
 TEL: (251) 460-6447 | FAX: (251) 460-6575 | southalabama.edu

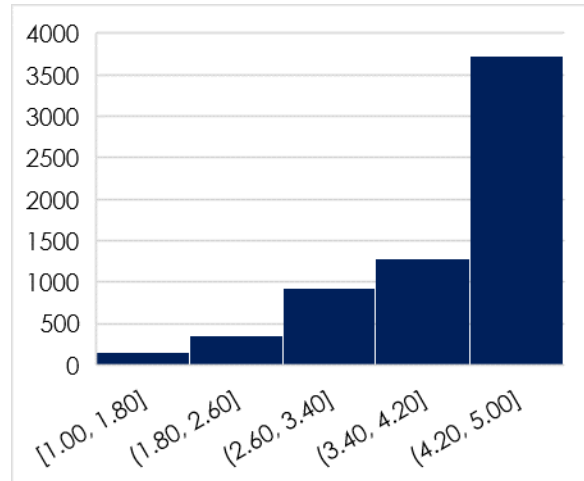
FALL 2022 RESPONSE RATES REPORT

Table 5: College of Engineering



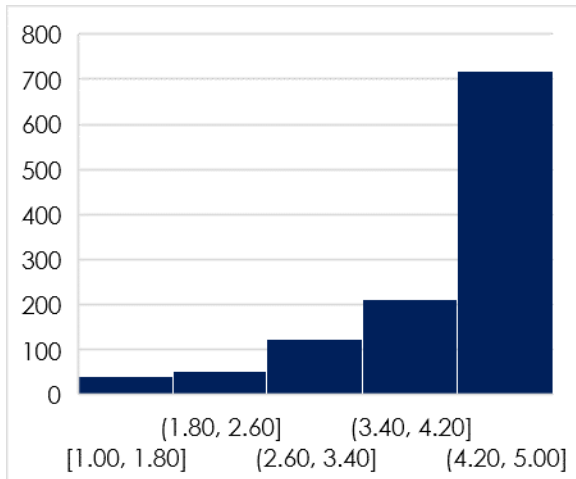
Mean	SD	Median	Response Rate (%)
4.26	.96	4.73	56%

Table 6: College of Nursing



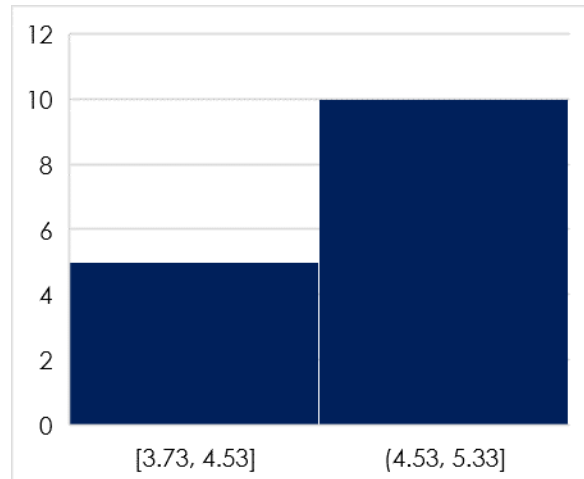
Mean	SD	Median	Response Rate (%)
4.21	.99	4.73	63%

Table 7: School of Computing



Mean	SD	Median	Response Rate (%)
4.25	1.00	4.73	58%

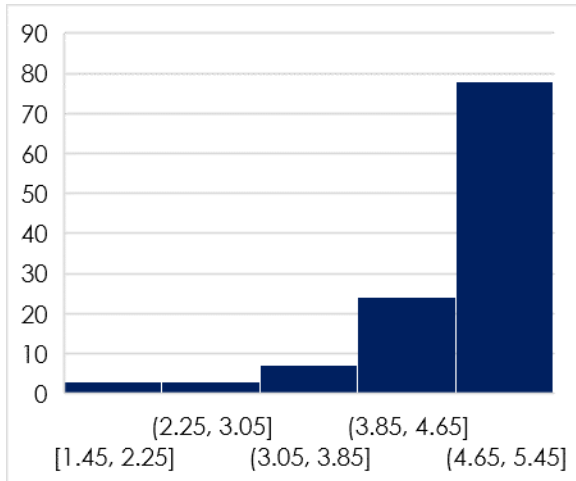
Table 8: The Graduate School



Mean	SD	Median	Response Rate (%)
4.47	.46	4.73	38%

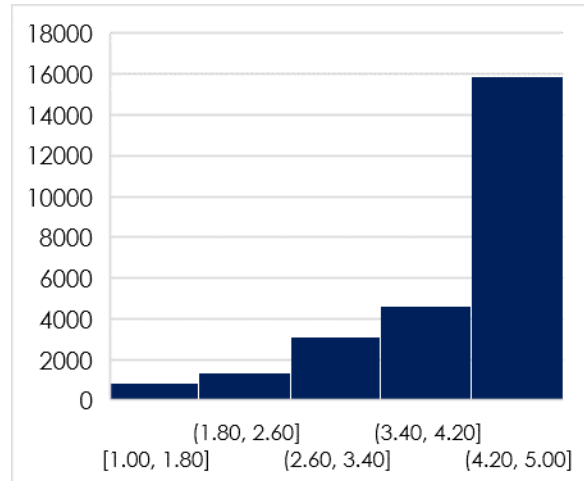
FALL 2022 RESPONSE RATES REPORT

Table 9: Honors College



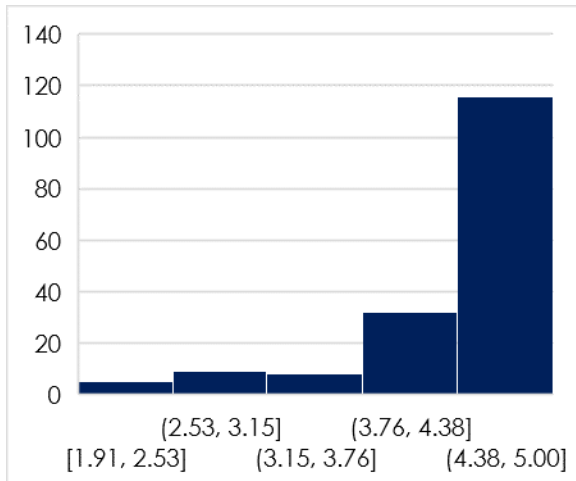
Mean	SD	Median	Response Rate (%)
4.59	.71	5	51%

Table 10: University Overall



Mean	SD	Median	Response Rate (%)
4.24	1	4.82	50%

Table 11: College of Medicine



Mean	SD	Median	Response Rate (%)
4.5	.71	4.91	34%