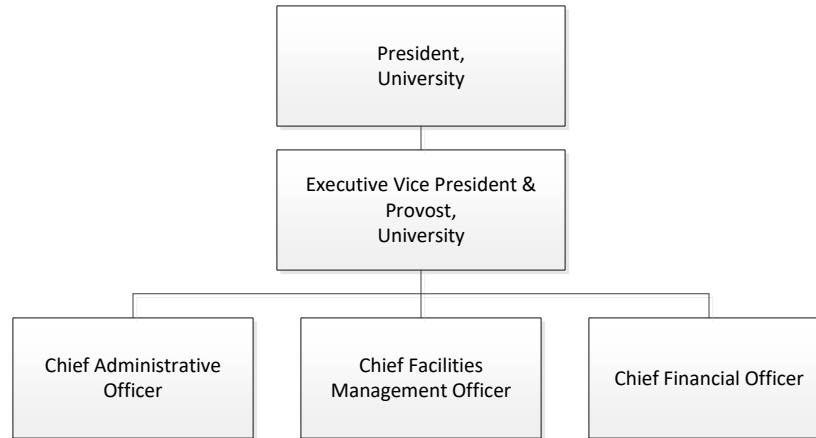
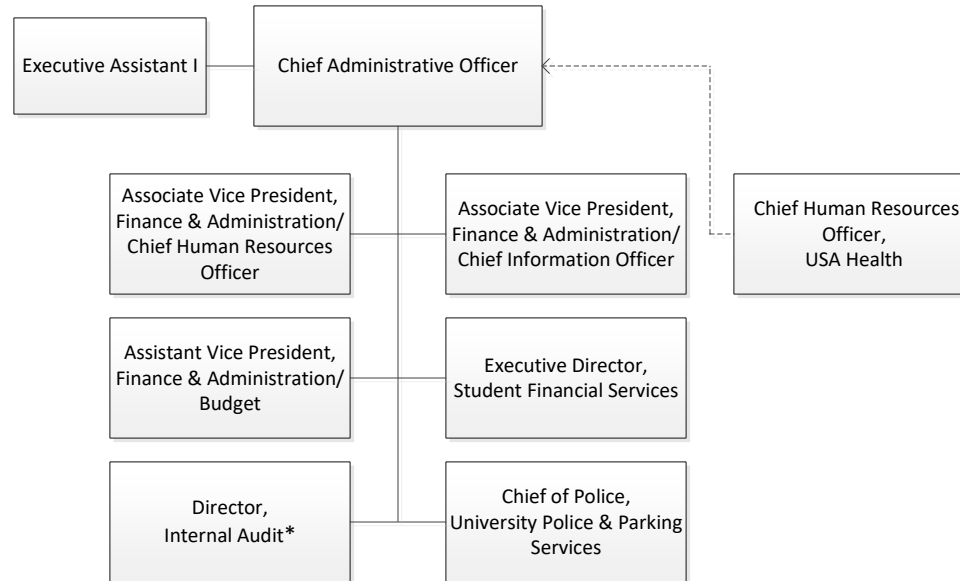


**University of South Alabama
Finance and Administration Division**

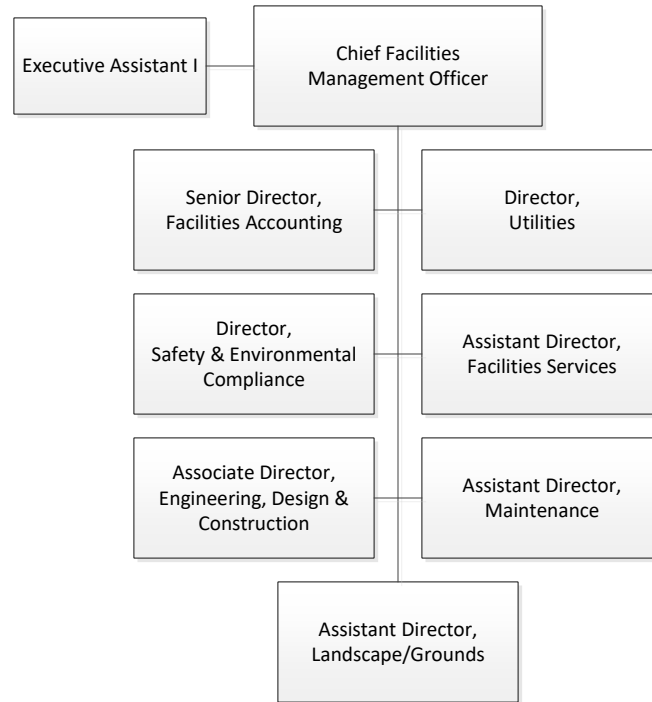


**Finance and Administration Division
Chief Administrative Officer**

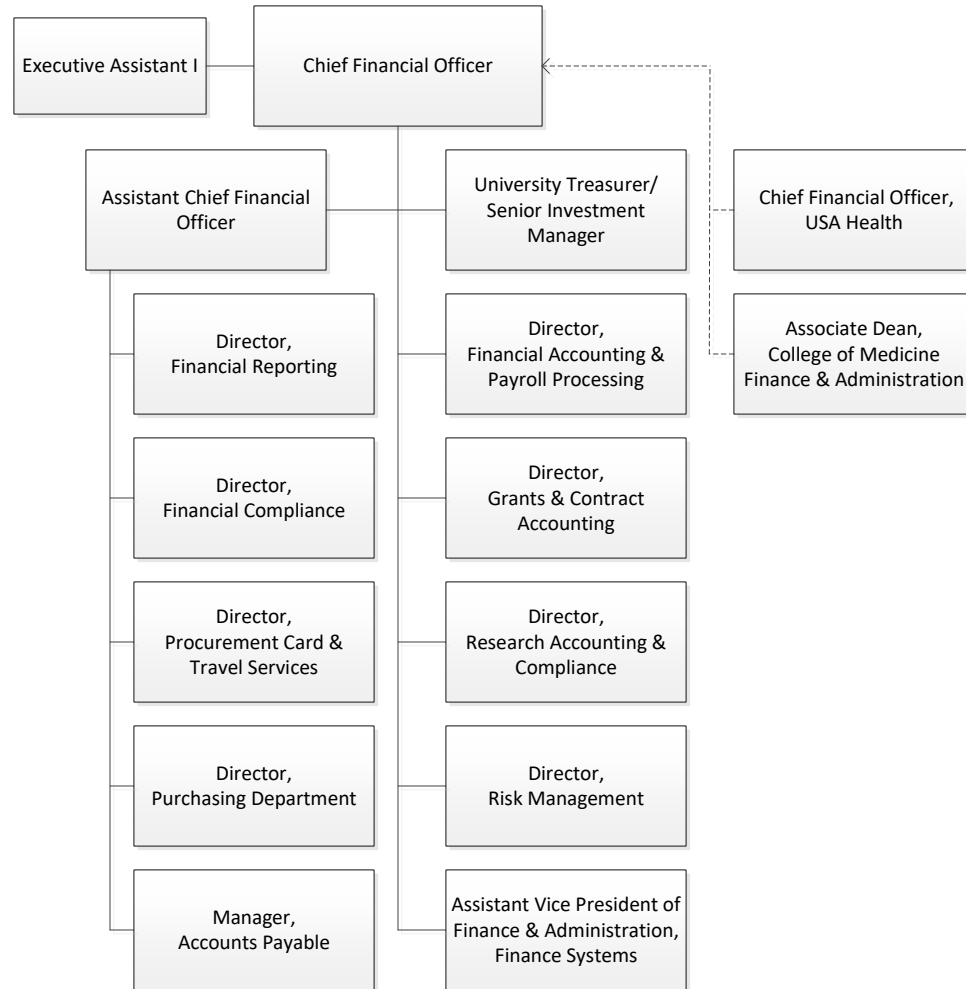


*Also reports to USA Board of Trustees Audit Committee

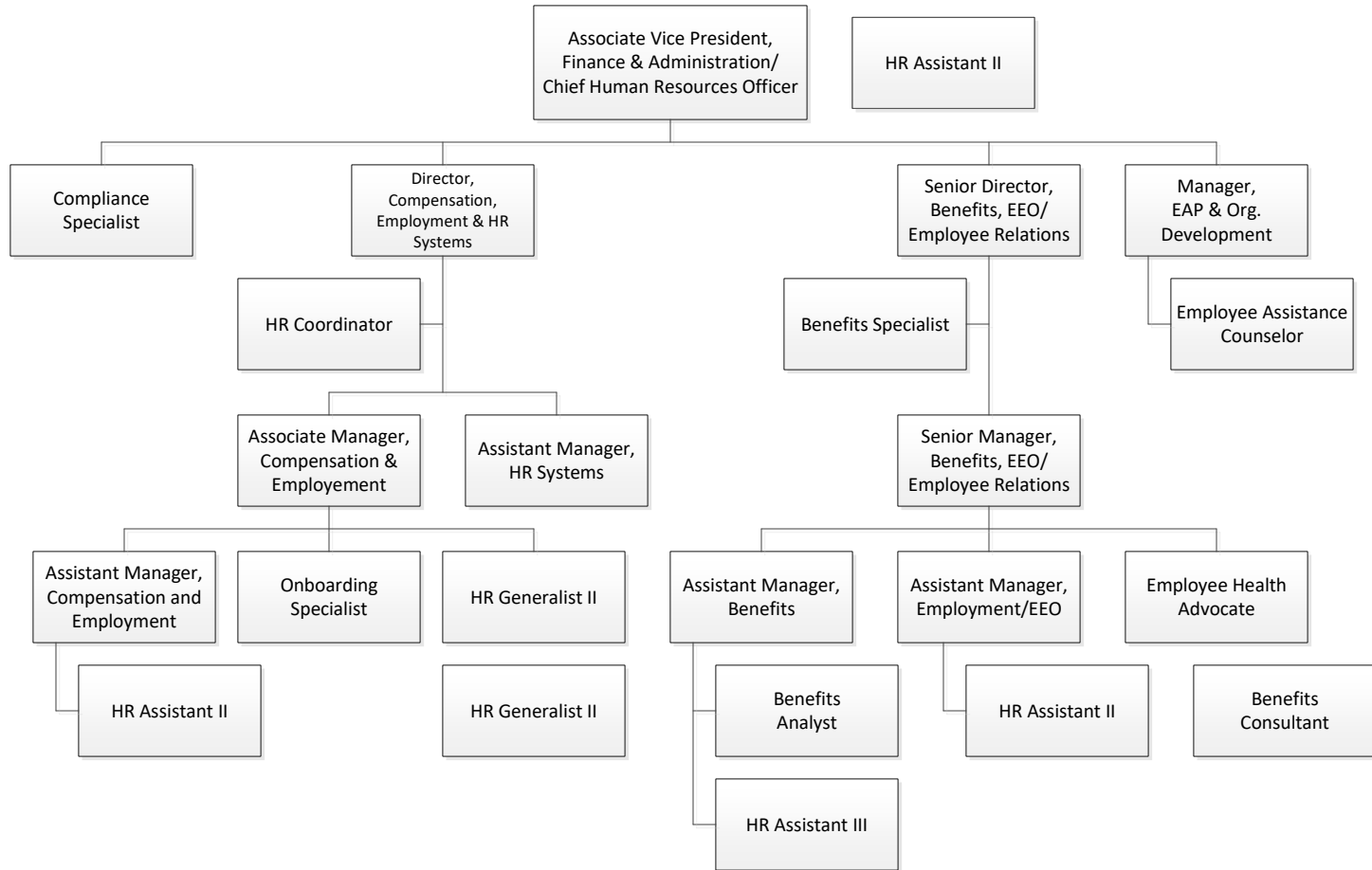
**Finance and Administration Division
Chief Facilities Management Officer**



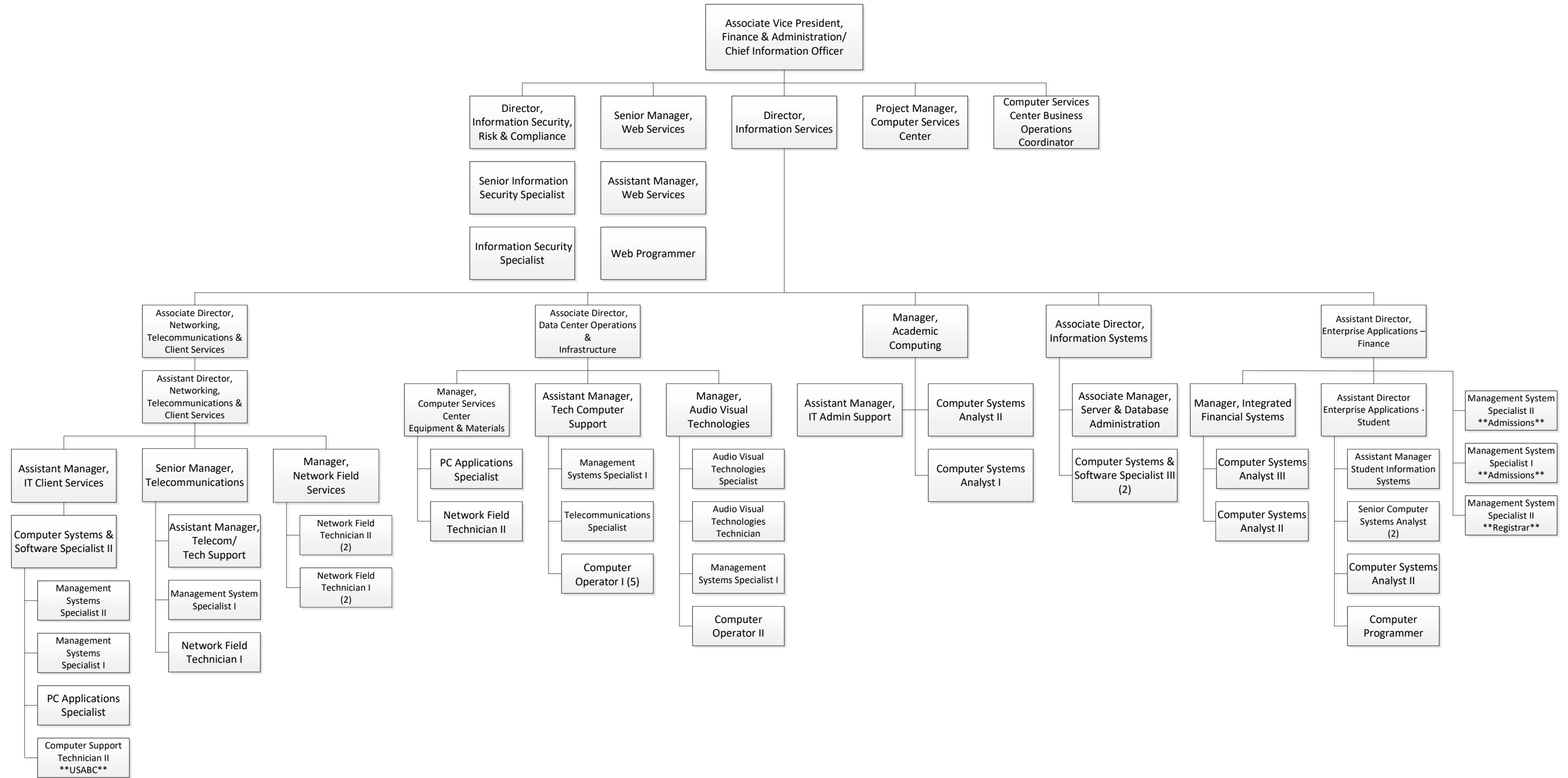
**Finance and Administration Division
Chief Financial Officer**



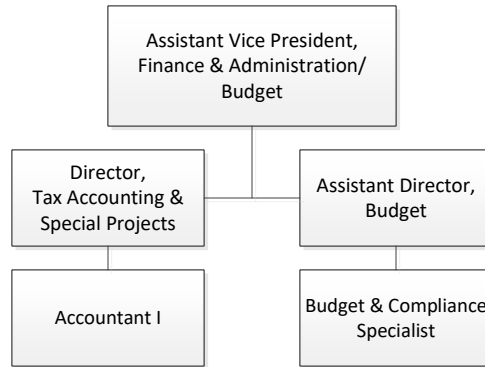
**Finance and Administration Division
Human Resources**



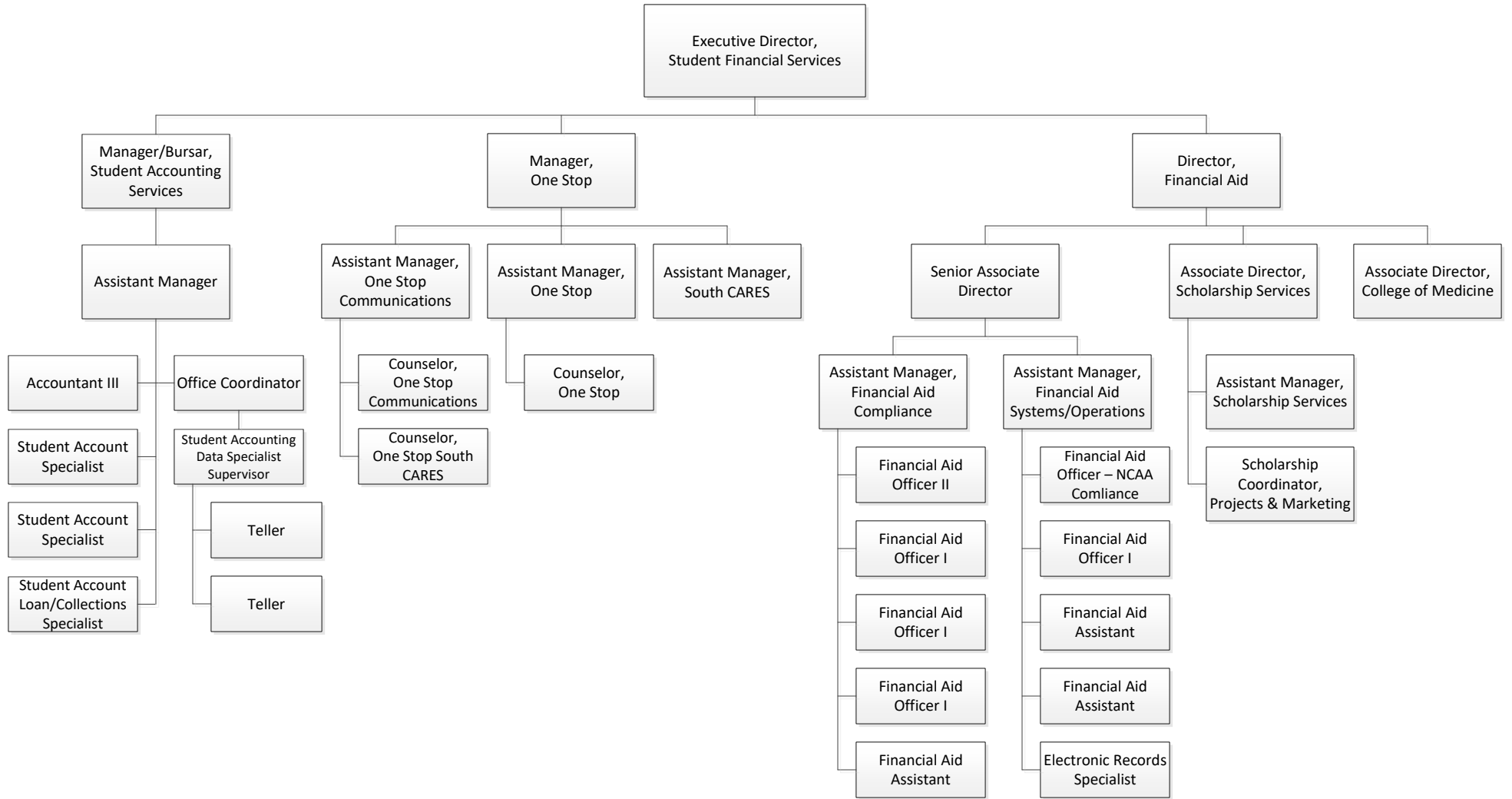
Finance and Administration Division Computer Services



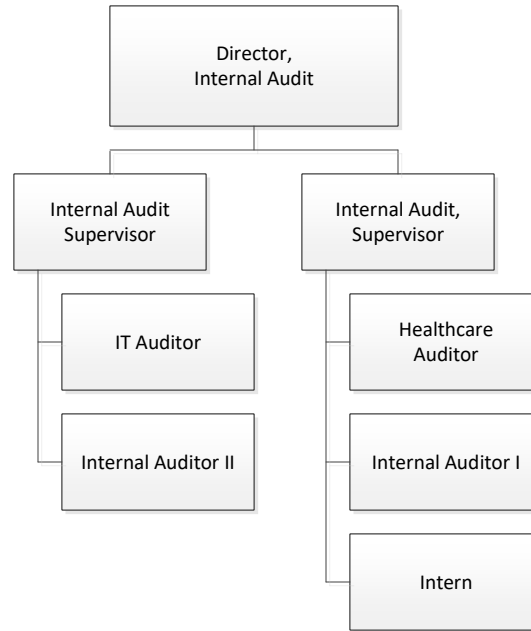
Finance and Administration Division
Budget, Tax Accounting, Finance & Administration
Information Systems Support



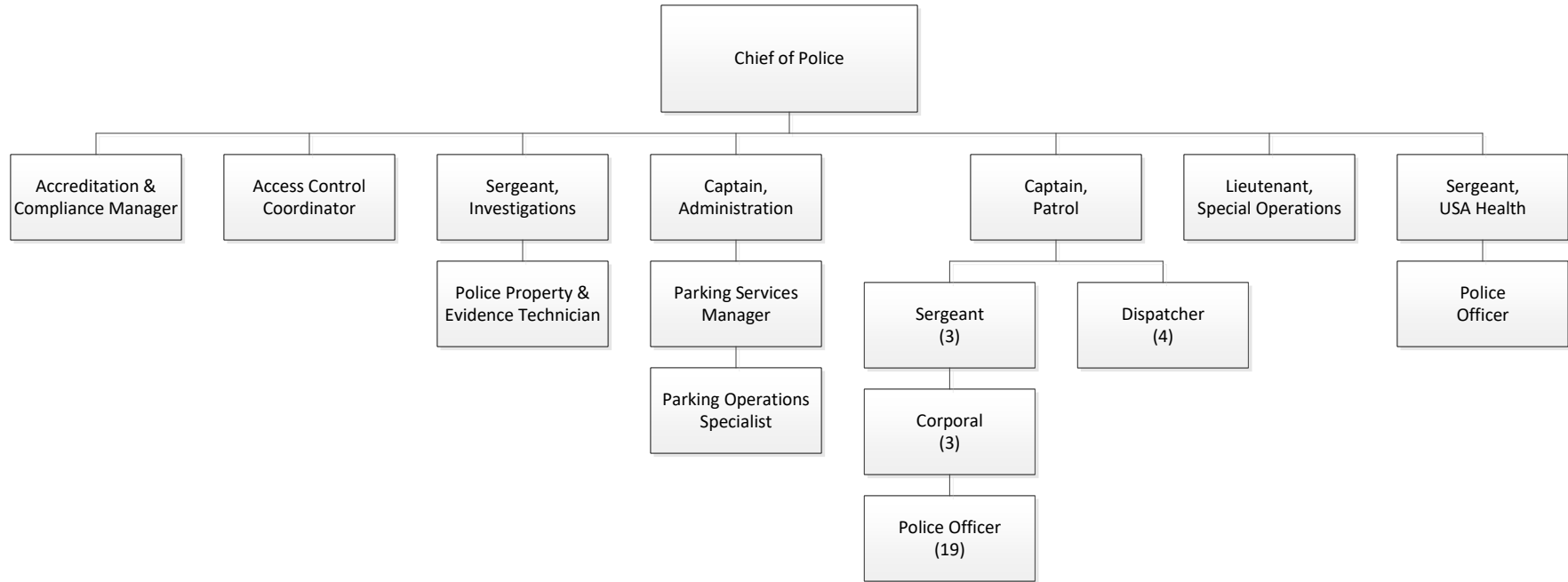
Finance and Administration Division Student Financial Services



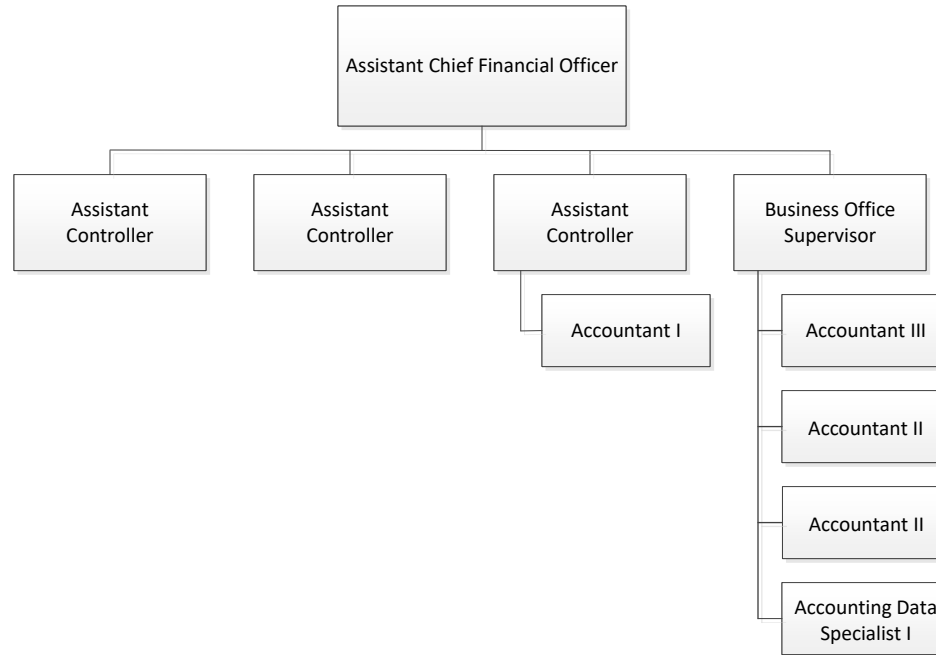
**Finance and Administration Division
Internal Audit**



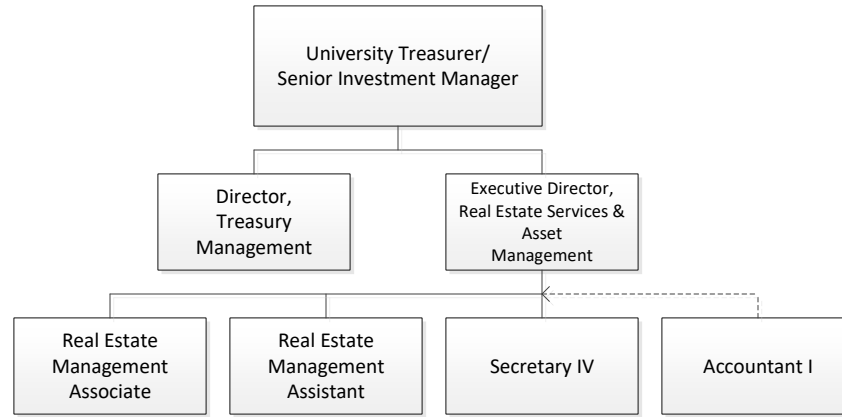
**Finance and Administration Division
University Police & Parking Services**



**Finance and Administration Division
Assistant CFO/Controller**

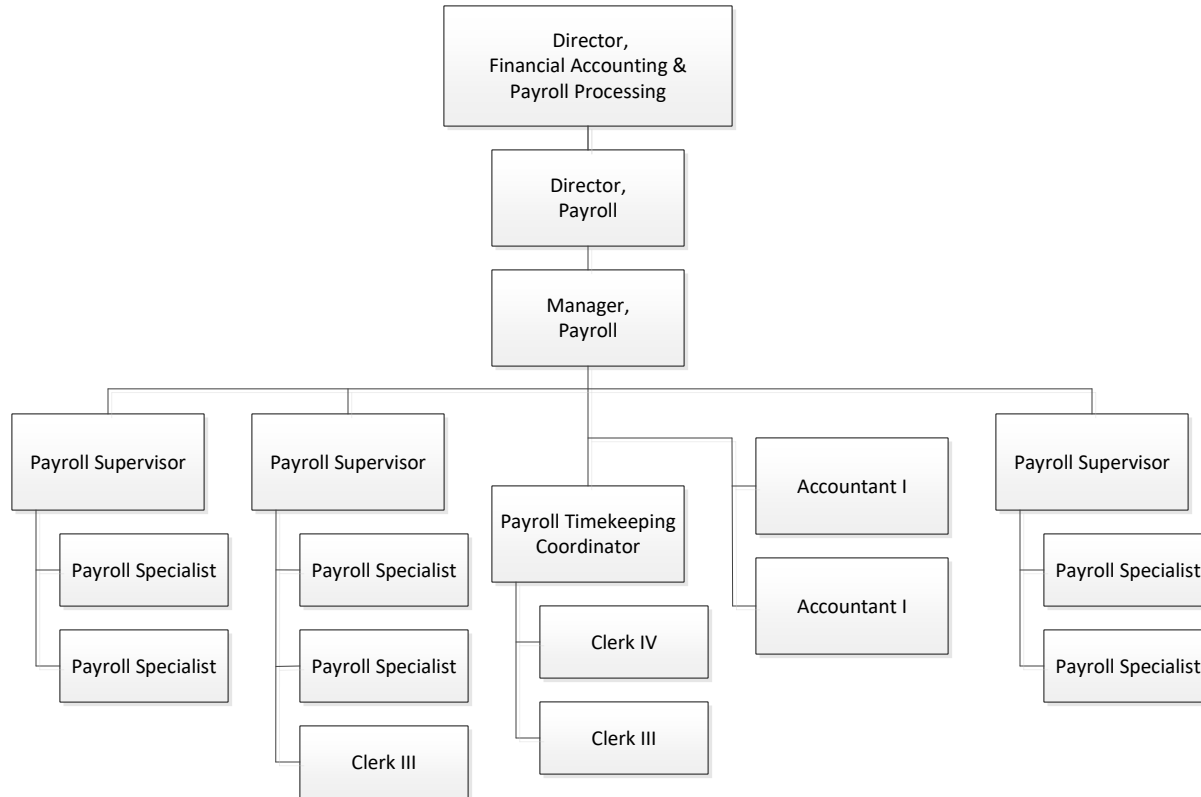


**Finance and Administration Division
Treasury Services**

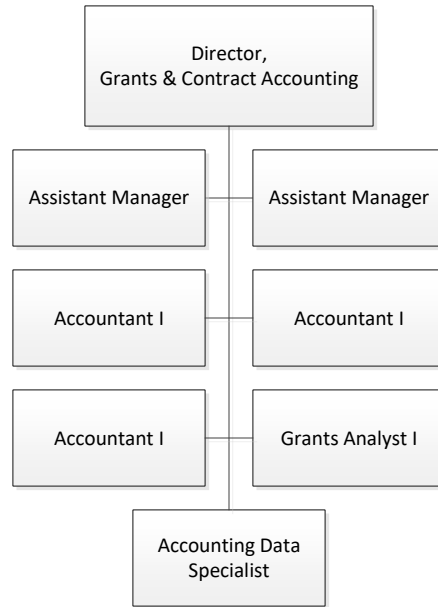


Finance and Administration Division

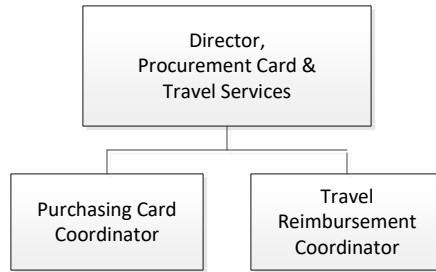
Payroll



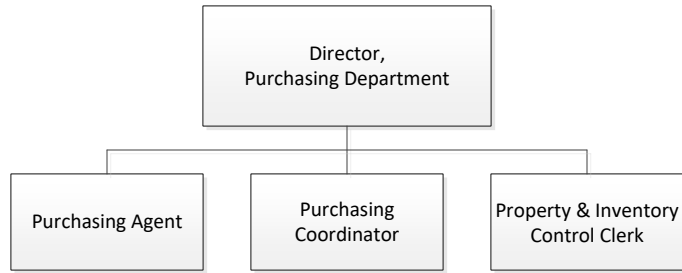
**Finance and Administration Division
Grants & Contract Accounting**



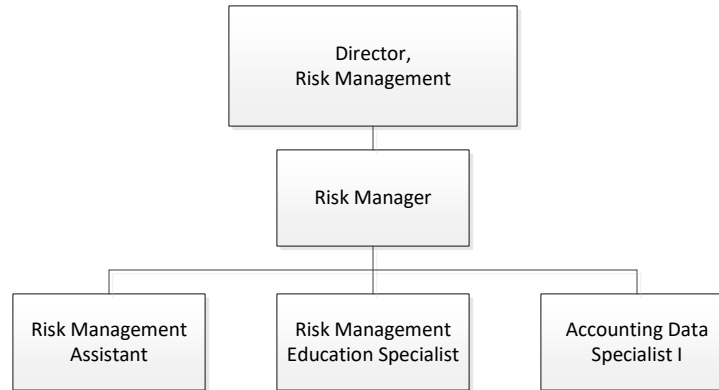
**Finance and Administration Division
Procurement Card & Travel Services**



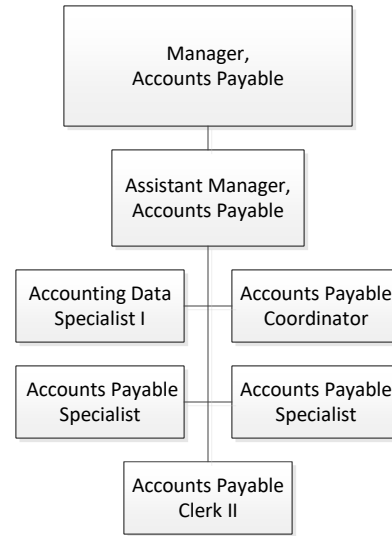
**Finance and Administration Division
Purchasing Department**



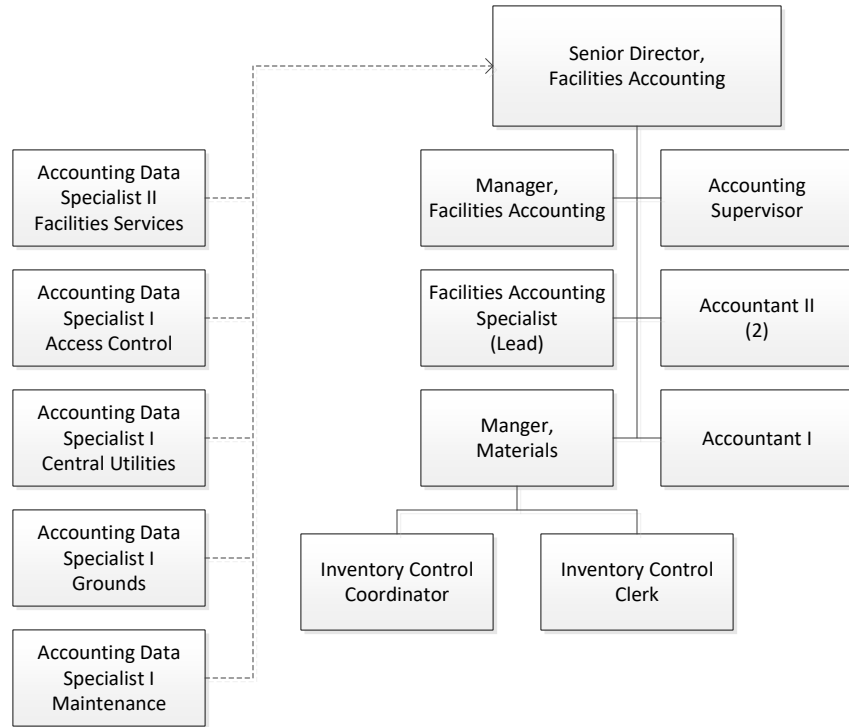
**Finance and Administration Division
Risk Management**



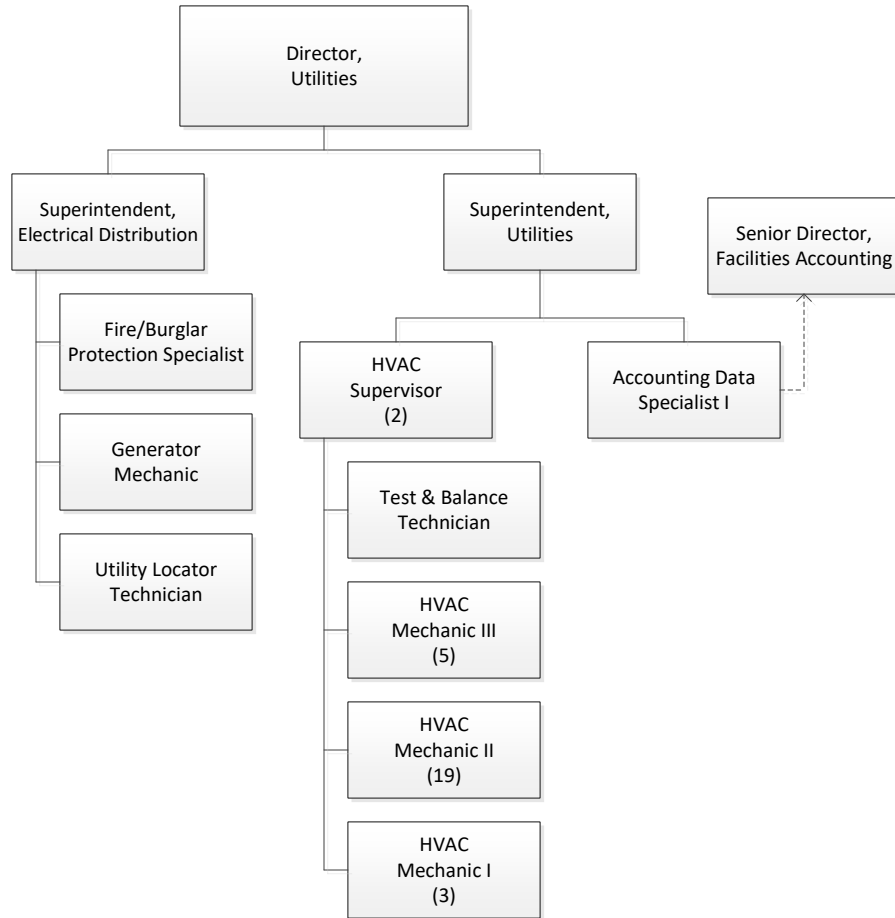
**Finance and Administration Division
Accounts Payable**



Finance and Administration Division Facilities Accounting



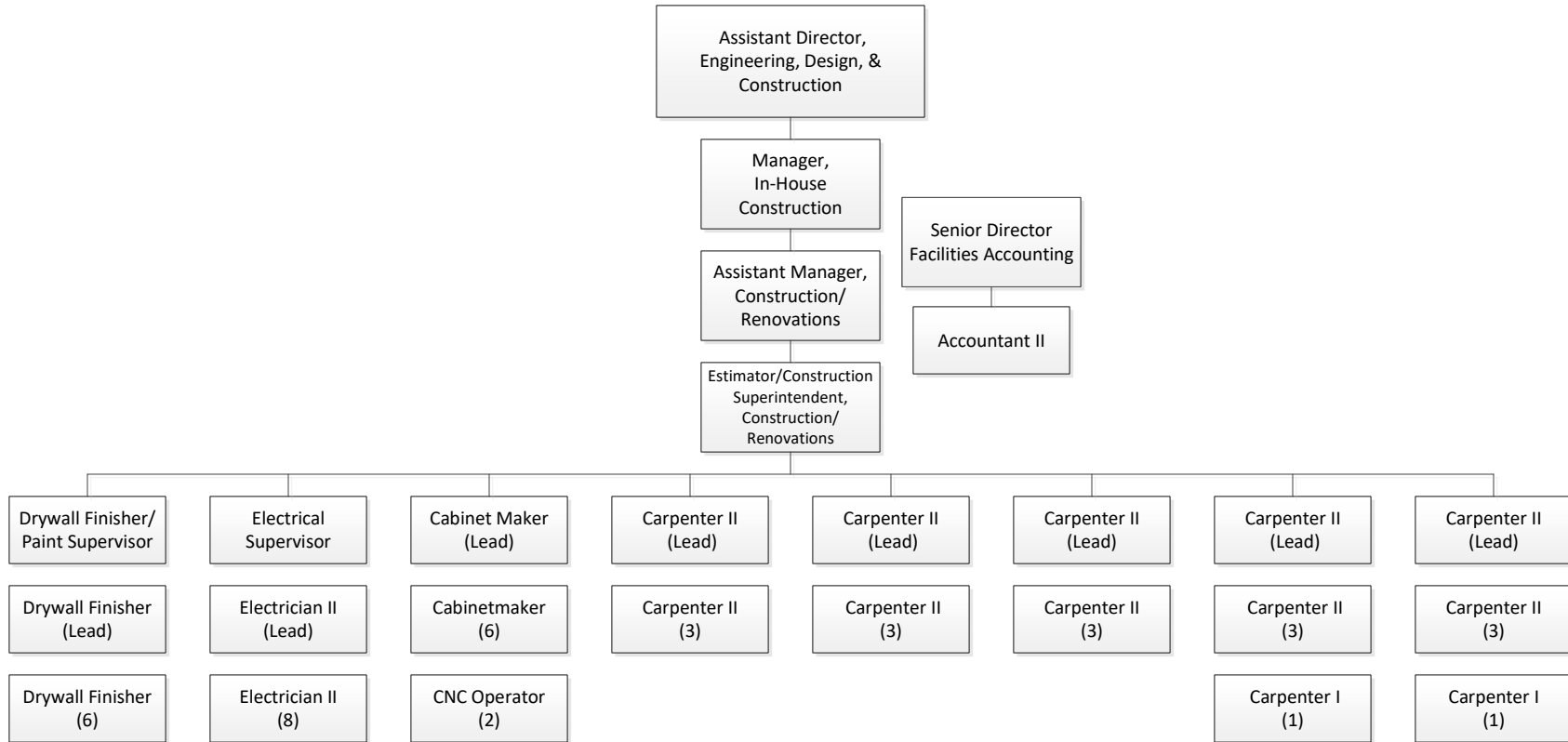
**Finance and Administration Division
Central Utilities**



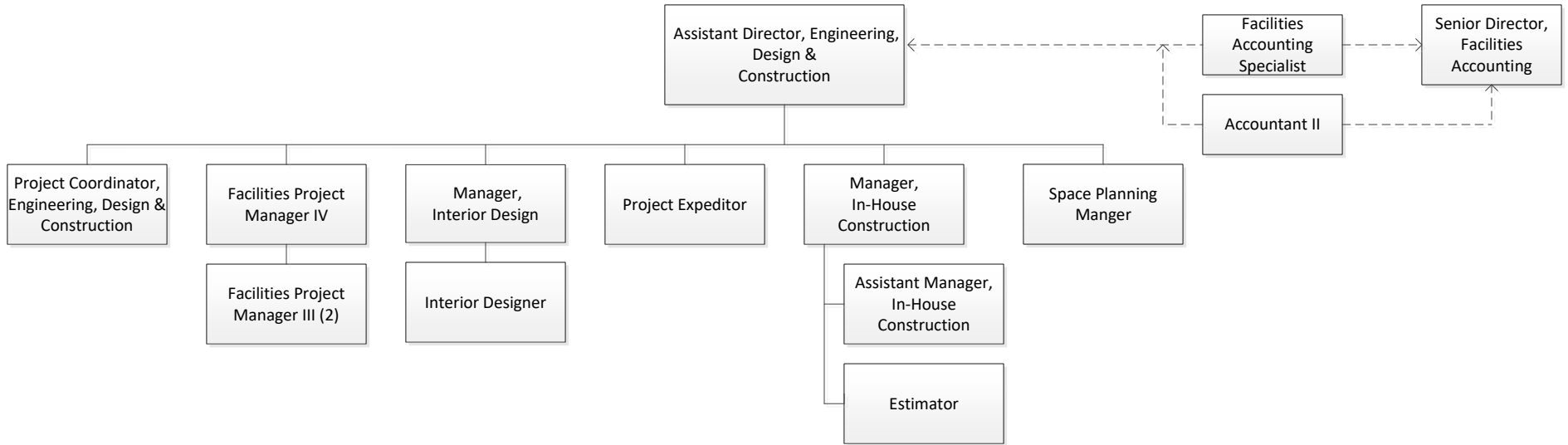
Finance and Administration Division Safety & Environmental Compliance



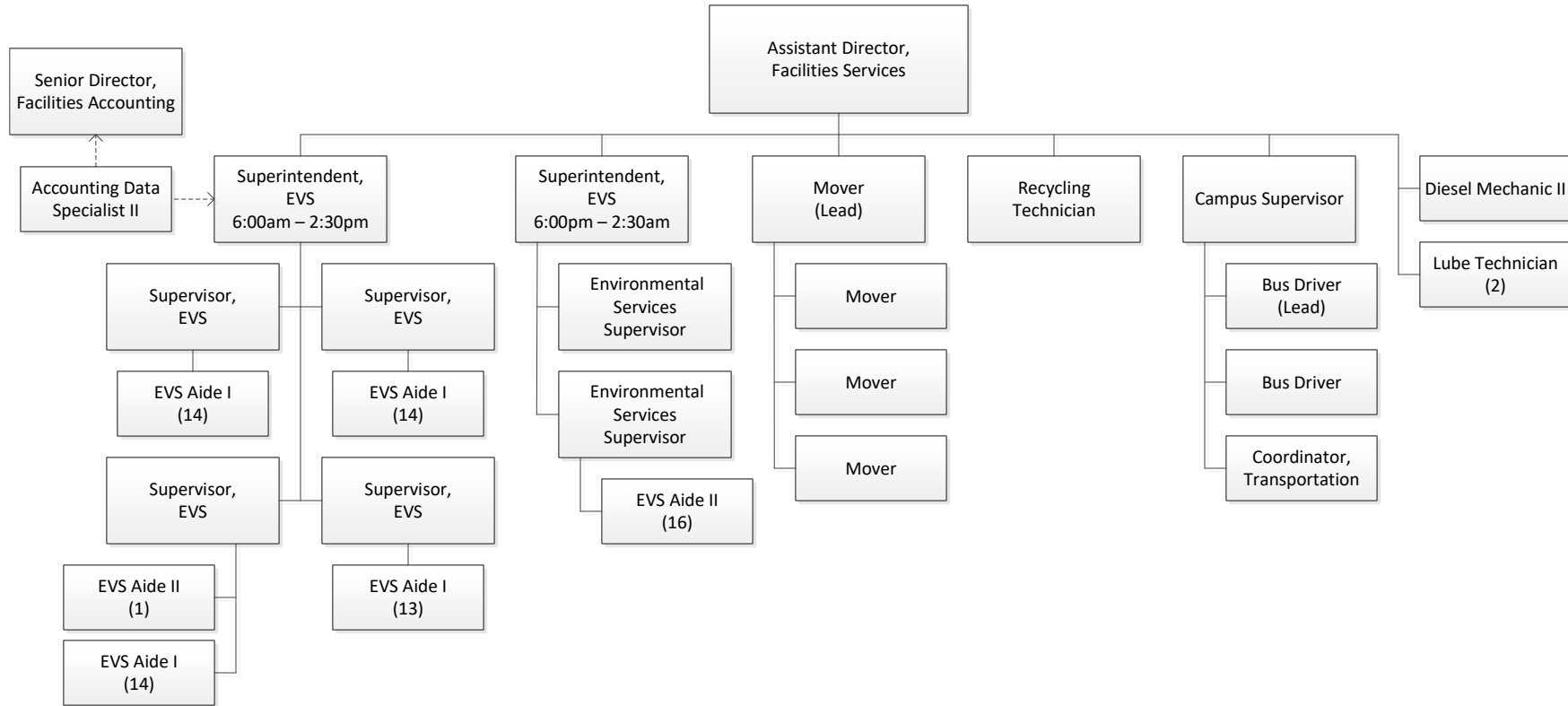
**Finance and Administration Division
In-House Construction**



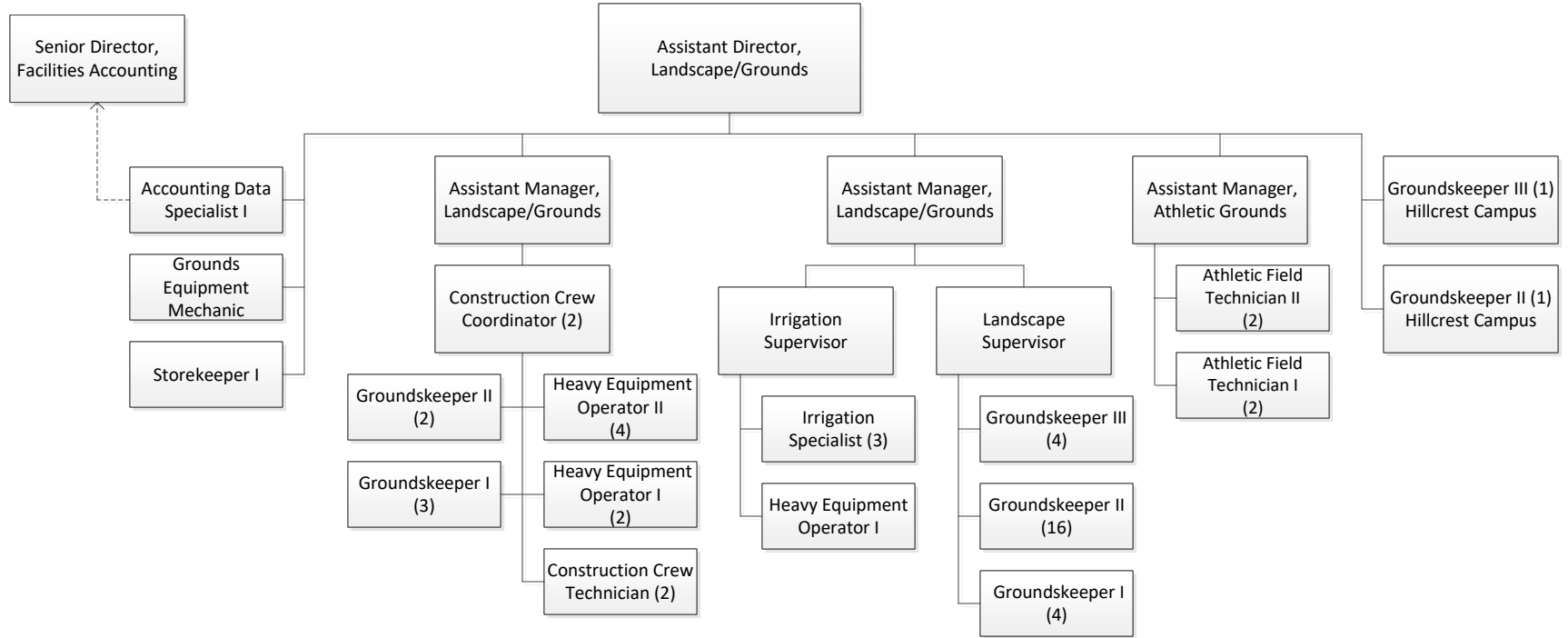
Finance and Administration Division Engineering, Design & Construction



**Finance and Administration Division
Environmental Services (EVS), Moving, Recycling, Jag Tran
& Fleet Services**



Finance and Administration Division Landscape/Grounds



Finance and Administration Division Maintenance

